



May 2020
Vol. 49, No. 2

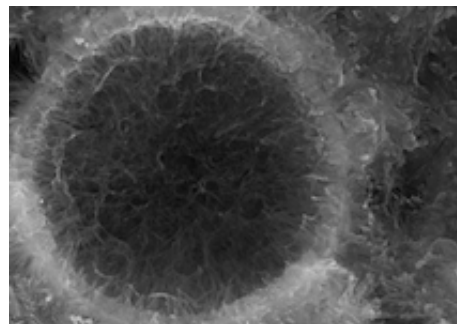


features



Successful Well Design and Remedial Cementing by Top Squeeze Method at Steamboat, NV, USA

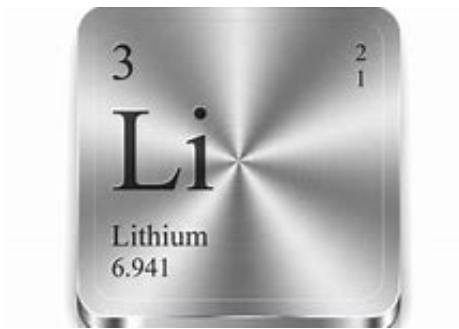
This case study of well design, construction, and implementation of top squeeze remedial cementing method in the Steamboat geothermal field, in fractured and potentially corrosive reservoir, is an example of how to manage and succeed in challenging geothermal environments.



Use of Fly Ash & Metakaolin in Wellbore Cementing to Prevent Alkali-Silica Reactivity of Amorphous Si-rich Components

ASR has long been studied in cement and concrete research, and a variety of methods have been shown to help in its prevention. This study looks at and compares the effects that fly ash (FA) and metakaolin (MK) have on lightweight wellbore cements containing silica-based microspheres as ASR

[► Read more](#)



California Banks on Lithium Extraction and Geothermal Holds the Key

Today's technology is increasingly powered by lithium batteries, creating an unprecedented demand for lithium. Find out more about how California is taking the lead in sustainable geothermal lithium extraction, and is looking to position itself as a top world supplier.

[► Read more](#)

prevention.

[► Read more](#)



In Memoriam: GRC Remembers Two Members

Two members of the geothermal sciences and GRC community passed away early this year. GRC shares the legacies of John Wilson Pritchett, a pioneer geothermal scientist, and Constance "Connie" Parks-Karl, a champion of women's roles in male-dominated fields.

[► Read more](#)



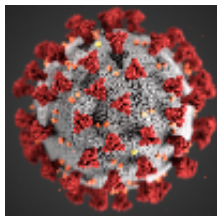
Message from the GRC President and Executive Director

Welcome to the GRC's new Bulletin! We're excited to bring you this latest edition in a new e-newsletter format that aims to engage our readers and members more effectively, and increase our circulation to a wider audience.

[► Read more](#)

GRC's Statement on Events & COVID-19.

GRC will continue to actively monitor the situation and the potential



impacts on future activities. The health & safety of our members and attendees is our highest priority, and that will guide any decisions that we make.

[▶ Read more](#)

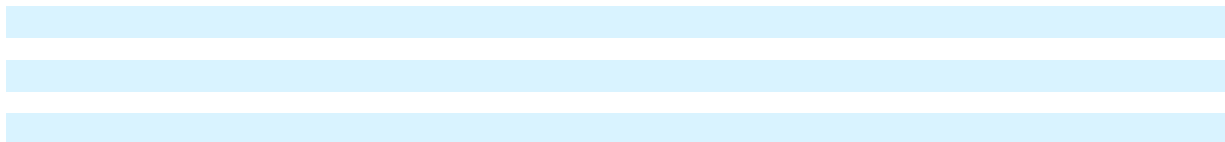


GRC Enacts Transformational Changes by Partnering with Association Headquarters.

GRC is changing to be better positioned for growth, to ensure financial sustainability and to offer more robust programming for its members.

(While coping with the impacts of Covid-19.)

[▶ Read more](#)



Geothermal Resource Group
TAPPING THE EARTH'S ENERGY

+1.760.341.0186 – Palm Desert CA USA – geothermalresourcegroup.com

- Drilling Supervision & Engineering
- Resource Eng. & Quantification
- Geoscience & Exploration

We take energy forward

We're committed to making energy safer, cleaner, and more efficient for people and the planet.
bakerhughes.com

Baker Hughes

GENERATING FOR GENERATIONS

WON'T YOU JOIN US?

ORMAT

special announcements



Reno2020 GRC Annual Meeting & Expo!

Maximize your exposure at the largest annual geothermal gathering in the world!

[▶ Read more](#)



The GRC 2020 Scholarship Awards Applications!

Read on for the individual awards, application details, and the deadline for submission.

[▶ Read more](#)



Call for Papers & Posters!

At this year's conference, authors can choose to write a paper and give an oral presentation OR submit an abstract and present a poster.

[▶ Read more](#)

2020 Geothermal Photo Contest

The GRC will hold its 41st Geothermal Photo Contest at the Reno2020 GRC Annual Meeting & Expo.

[▶ Read more](#)

Probe is now the new name and look of the Kuster line of products



Geothermal X-Y Caliper



probe1.com
reliable technology | intelligent solutions



Geothermal Resources Council

1120 Route 73, Suite 200

Mount Laurel, NJ 08054

www.geothermal.org

Provide feedback on the new Bulletin:

media@mygeoenergy.org

[Unsubscribe](#)

